

RESEARCH IN CALIFORNIA DUAL ENROLLMENT: BARRIERS, INNOVATIONS, POLICY LANDSCAPE



Get Focused Stay Focused
January 3, 2019

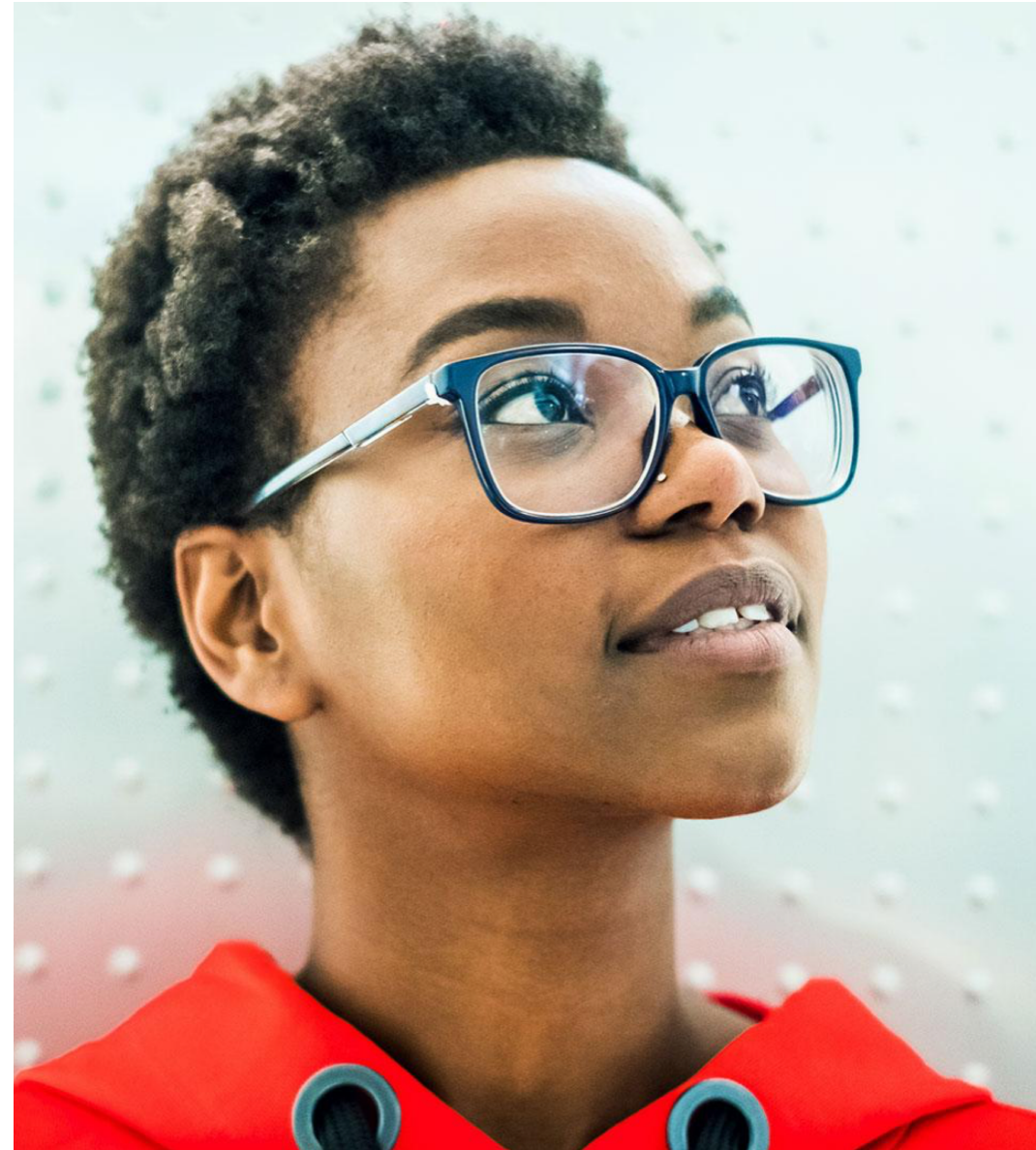
PRESENTED BY

Naomi Castro, Career Ladders Project
Joel Vargas, JFF

ALL YOU NEED TO KNOW
ABOUT JFF

The American labor market is broken. Our rapidly changing economy demands skilled and adaptable workers, but many people lack the education and training employers require. JFF is transforming the workforce and education systems to accelerate economic advancement for all.

JFF designs innovative solutions, scales proven programs, and influences industry action and policymaking to drive the most transformative impact.



OUR WORK

The Career Ladders Project (CLP) aims to improve educational and career outcomes for Californians. We foster these opportunities through research, policy reforms and strategic assistance to community colleges—and their K16 education, workforce and community partners.

NEWS

Bringing Student Voices to Guided Pathways Inquiry and Design: Findings from Student Focus Groups at Two California Community Colleges

August, 2017

"I've been guilty of this—and it is a common thing in here—where you take class after class and you kind of forget your end goal... but it would be great to hav..."



[Read More News](#)

Stay updated with CLP, sign up for our newsletter here.

Career Ladders Project
fosters educational
and career
advancement through
**research, policy
initiatives** and **direct
assistance** to
community colleges
and their partners.

AGENDA

About Our Research

California's Dual Enrollment Landscape

CLP Research Findings: Institutional Challenges and Bright Spots

JFF Research Findings: System-Level Barriers and Examples from Other States

A Proposed Agenda for Advancing Dual Enrollment in CA: Your Input and Feedback

Building a
future
That Works.

RECENT RESEARCH PROJECTS

DUAL ENROLLMENT RESEARCH QUESTIONS

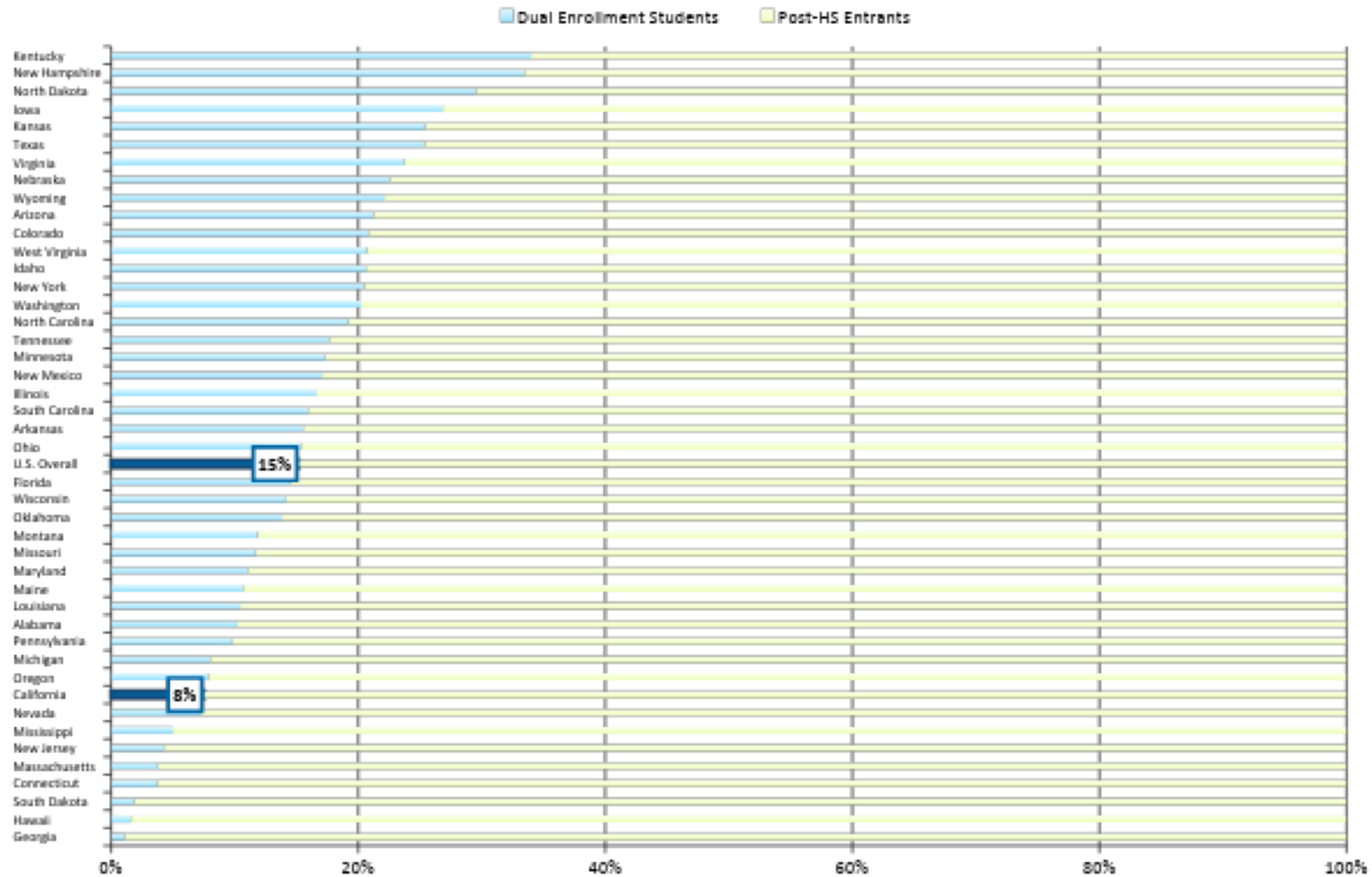
1. What did dual enrollment look like in CA on the cusp of AB 288?

1. What did AB 288 attempt to solve?

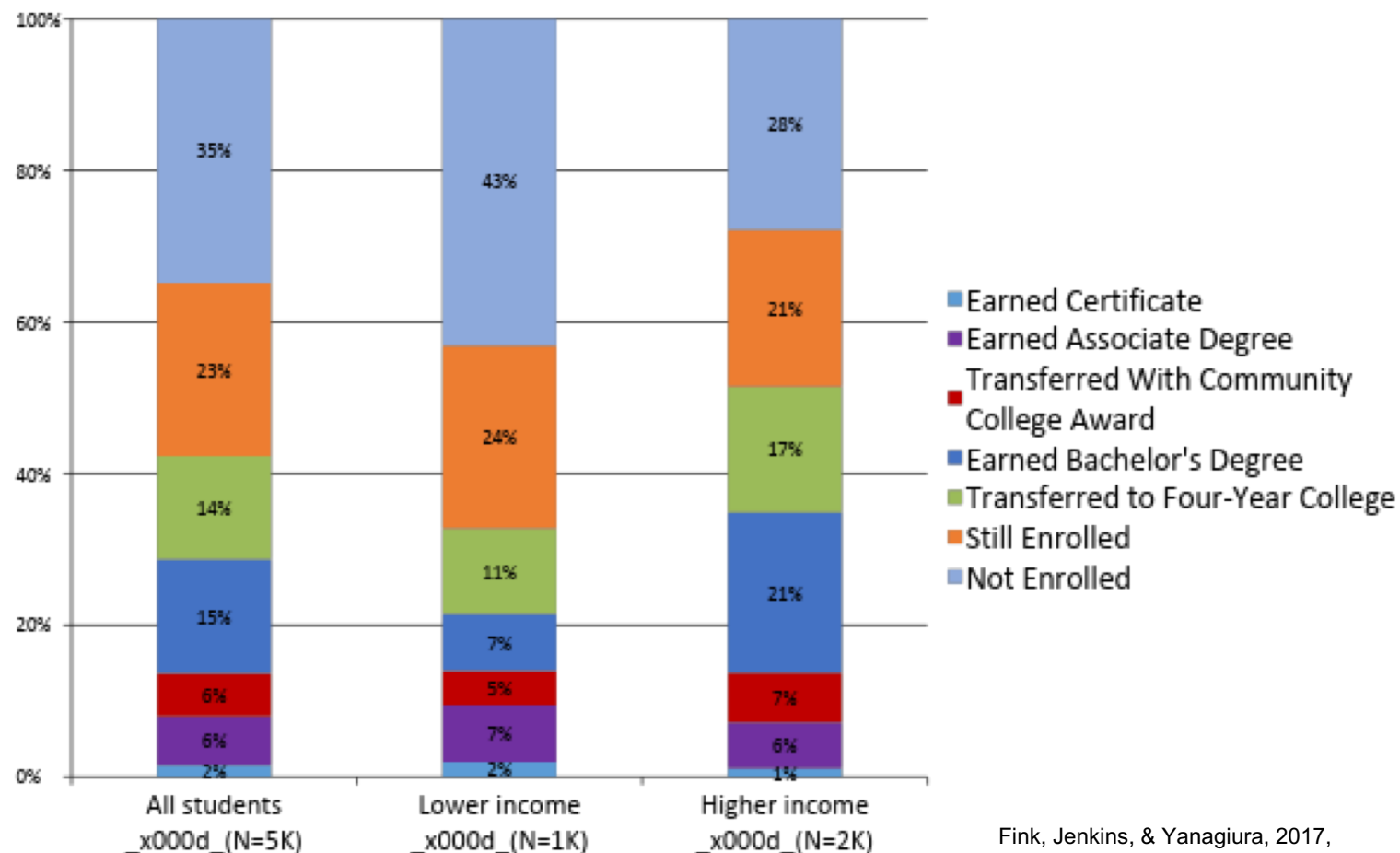
3. What barriers do schools/colleges continue to have with respect to expanding high-quality dual enrollment?

4. What experiences from other states could be instructive for CA?

Percent of Community College Entrants who are in High School Dual Enrollment, by State



California: Highest Outcomes in Six Years by Income Among Students Who Participated in Dual Enrollment at Age 17 and First Matriculated at a **Community College** at Ages 18–20



Fink, Jenkins, & Yanagiura, 2017, Further analysis of NSC data by authors

TWO TYPES OF DUAL ENROLLMENT IN CA

Non-CCAP

- Schools & colleges
- Open classes
- Advanced scholastics & vocational

- MIS
- Random acts or planned

CCAP (AB 288)

Districts & district

- Closed classes
- Students who are underrepresented & may not go to college
- MIS + data sharing
- Pathways
 - CTE
 - Transfer
 - HS graduation
 - College & career readiness

CURRENT STATE OF DUAL ENROLLMENT IN CA

- Majority of students come to the college on their own
- Slow uptake of AB 288; less anxiety around compliance
- Implementation challenges, as infrastructure, staffing and practice issues not addressed
- Expansion provides innovation and “bright spots”
 - Deepening of partnerships
 - Holistic, structured programs with integrated supports;
 - Rethinking the college culture and who is a college student
 - Focus on underrepresented students and their families

CLP FINDINGS

48 COLLEGES:

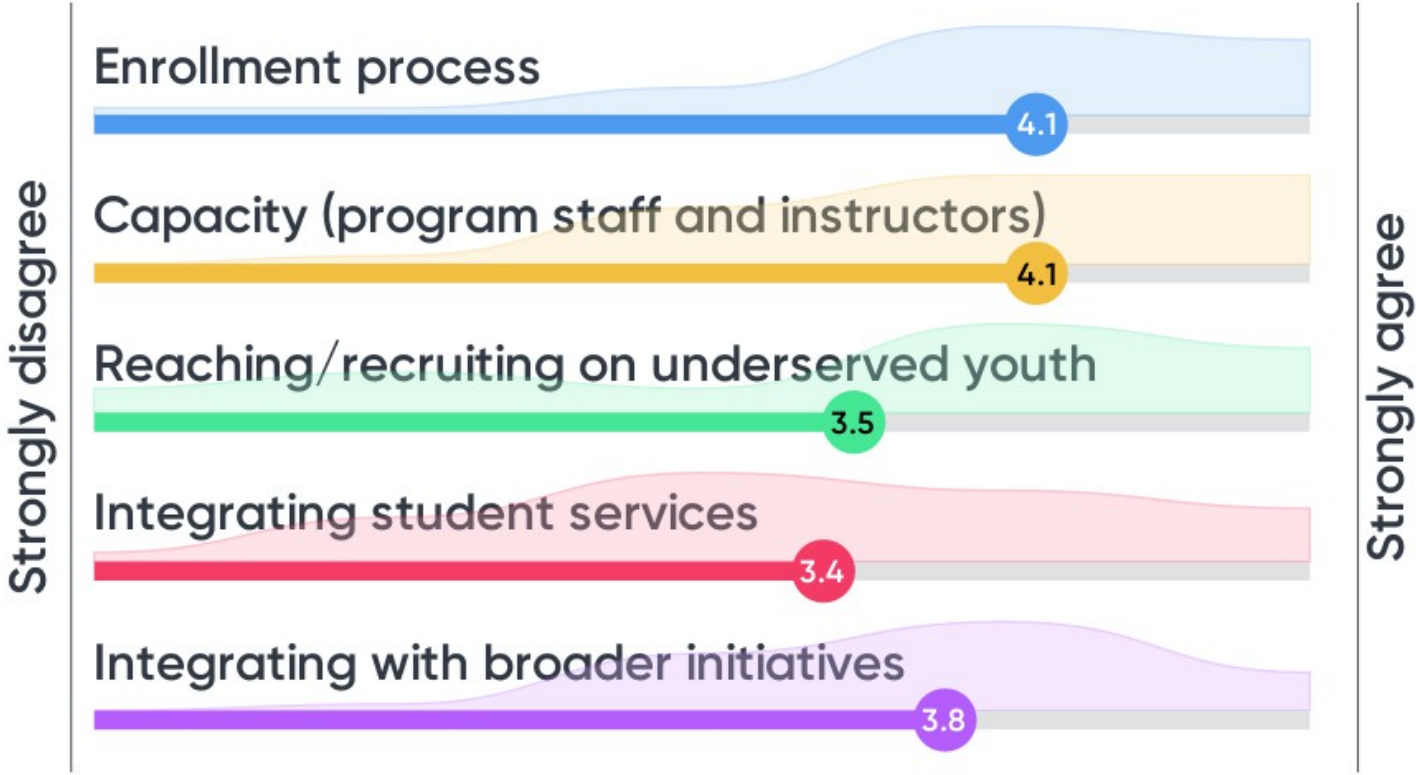
- Data collection & enrollment
- Capacity & implementation
- Underserved youth
- Student services
- Growth with quality
- Integration
- Uncertainty about commitment at state level
- Uncertainty about new funding formula

<http://www.careerladdersproject.org/dual-enrollment-landscape/>

CLP | Career
Ladders
Project



This issue is a significant challenge at my site/in the sites I work with:



CLP FINDINGS

GOOD NEWS:

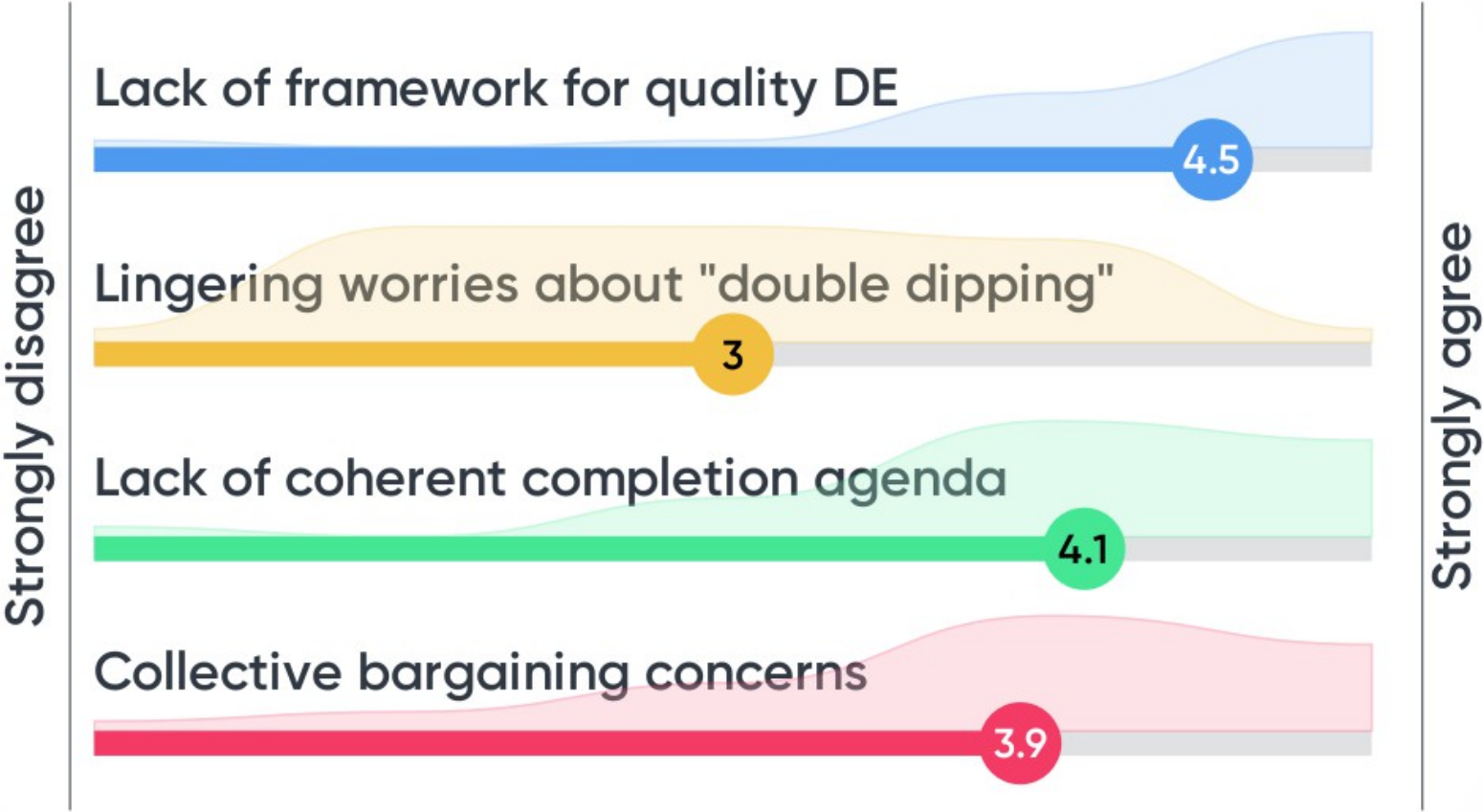
- Colleges and high schools innovating
- CCAP seen as just one tool among many
- Commitment of leadership = strong partnerships
- Thoughtful pathways designs leading to certificates, degrees and transfer
- Reedley
 - robust pathway
 - district dual enrollment committee
 - data sharing for intervention
- East Los Angeles
 - community asset model
 - adult ed + dual enrollment

JFF RESEARCH

SYSTEMS-LEVEL BARRIERS IN CA

- Lack of a common framework for defining best practices and validating program quality
- Lingering worries about “double dipping”
- Lack of coherent, coordinated state-level college completion agenda
- Collective bargaining concerns

These are significant challenges in California



JFF RESEARCH

PROMISING PRACTICES AND POLICY LESSONS: OTHER STATES

- High-level leadership/vision
 - Governor's office support
- Dual enrollment as part of statewide college and career success strategic plans
- Framework for quality control and best practices
 - NACEP standards;
 - Pathway requirements
- "Hold harmless" funding policies
 - Based on analysis of long-term cost benefits for the state
- Meaningful HS teacher- college faculty engagement
 - Shared roles for program design and quality assurance

CLP | Career
Ladders
Project



A PROPOSED AGENDA

**KEY CONDITIONS FOR ADVANCING DUAL
ENROLLMENT IN CALIFORNIA**

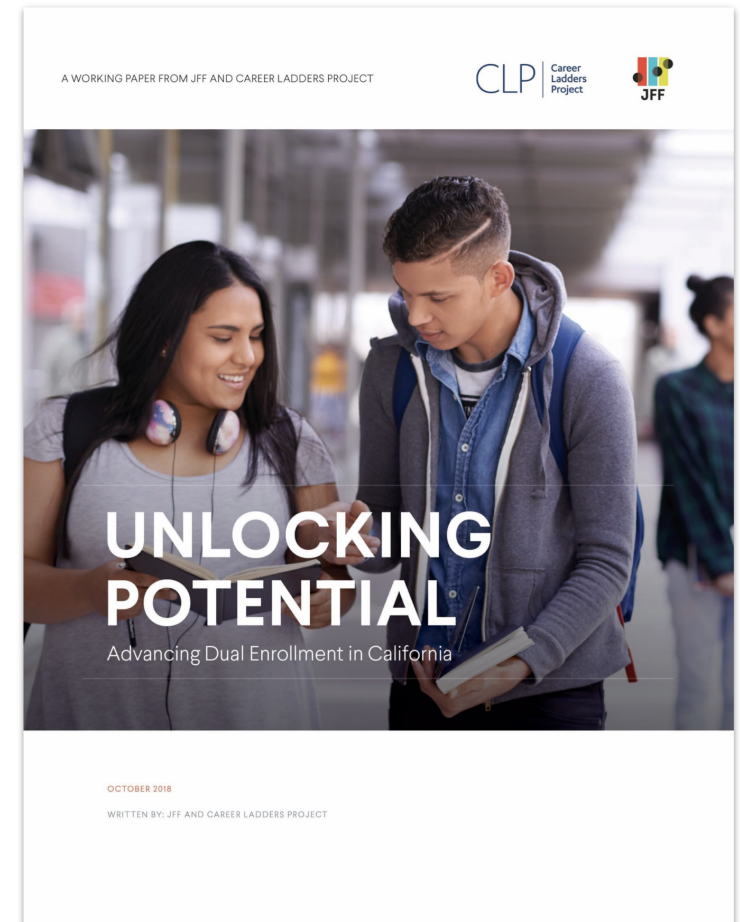
1. **Articulate a coherent vision of the role of high-quality, equitable** dual enrollment within the college completion movement in CA
2. **Build capacity**, share effective practice, and address known implementation challenges
3. **Build broader demand for high-quality dual enrollment**
4. **Identify additional policy opportunities**, as well as policy barriers and considerations for future legislation, before the sunset of AB 288 in 2022

Unlocking Potential

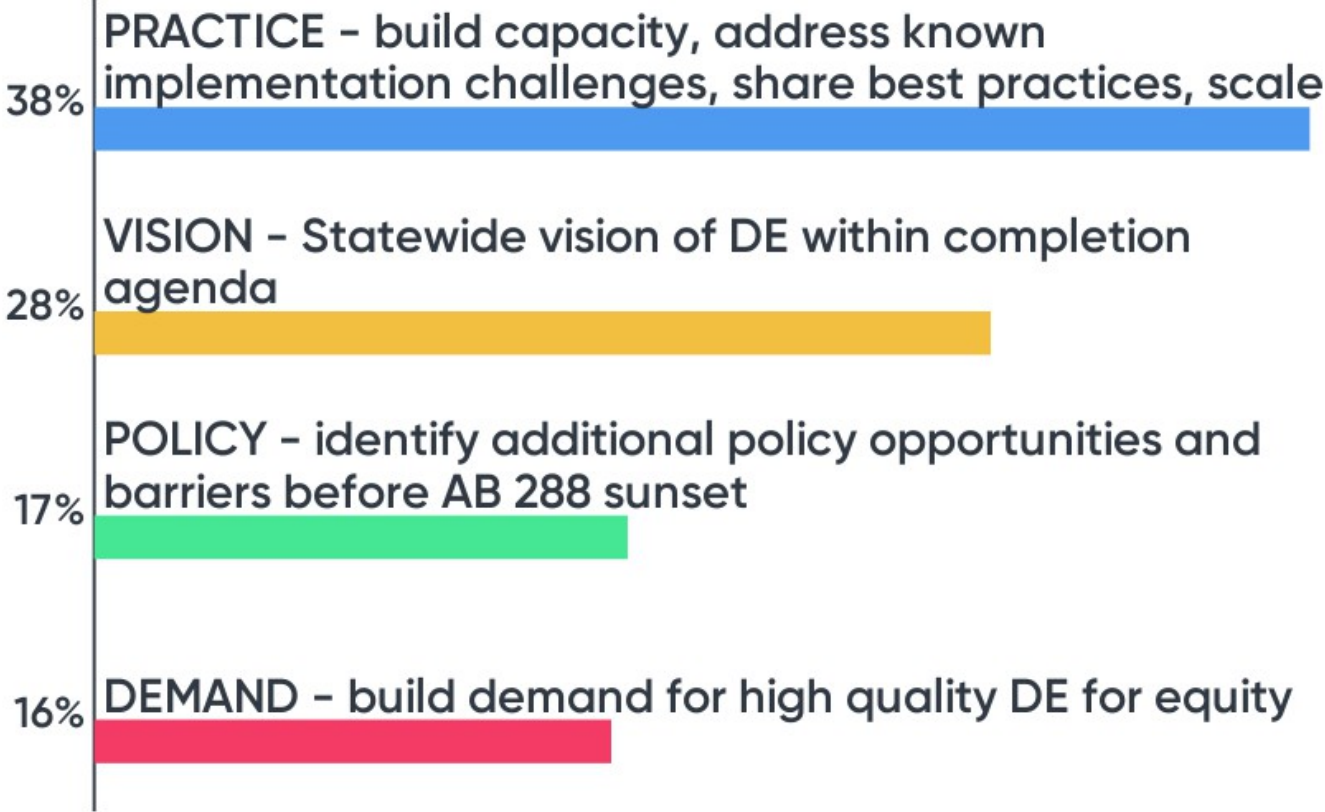
Advancing Dual Enrollment in California

- Summary of lessons learned across both CLP and JFF's research projects
- Strategic leverage points for advancing high-quality dual enrollment with a focus on equity

<https://www.jff.org/resources/dual-enrollment-california-applying-national-lessons-state-challenges/>



Which area(s) are most important to advancing dual enrollment in California?



FOR UPDATES AND TO PARTICIPATE:

**E-MAIL LIST AND ACTION
GROUP SIGN UP**

[https://goo.gl/forms/Ybl5Z
bRiZGlufDTv1](https://goo.gl/forms/Ybl5ZbRiZGlufDTv1)

Or email:

ncastro@careerladders.org

or

shooker@jff.org





THANK YOU

JOEL VARGAS

JFF

jvargas@jff.org

<https://www.jff.org/resources/dual-enrollment-california-applying-national-lessons-state-challenges/>

NAOMI CASTRO

Career Ladders Project

ncastro@careerladdersproject.org

<http://www.careerladdersproject.org/dual-enrollment-landscape/>